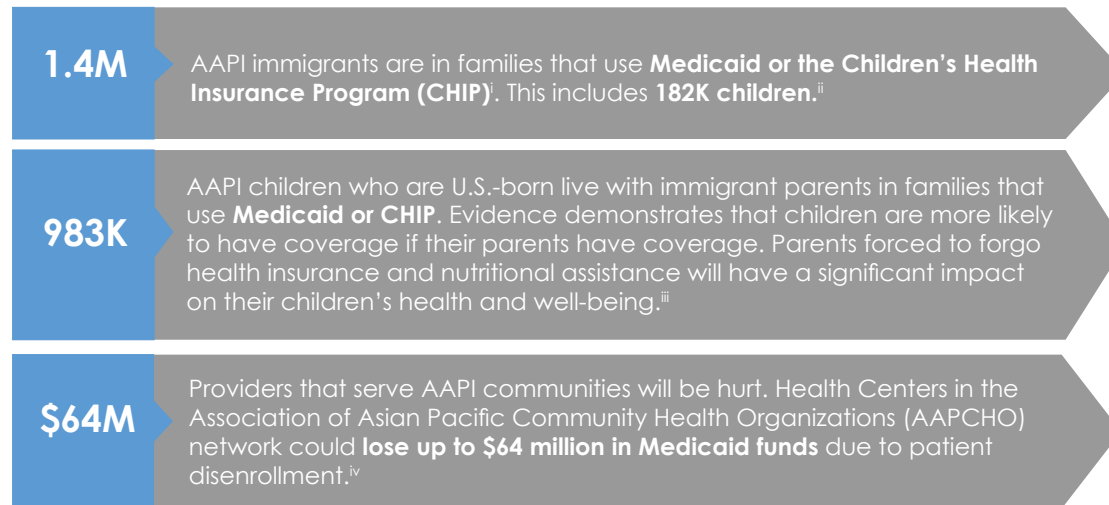


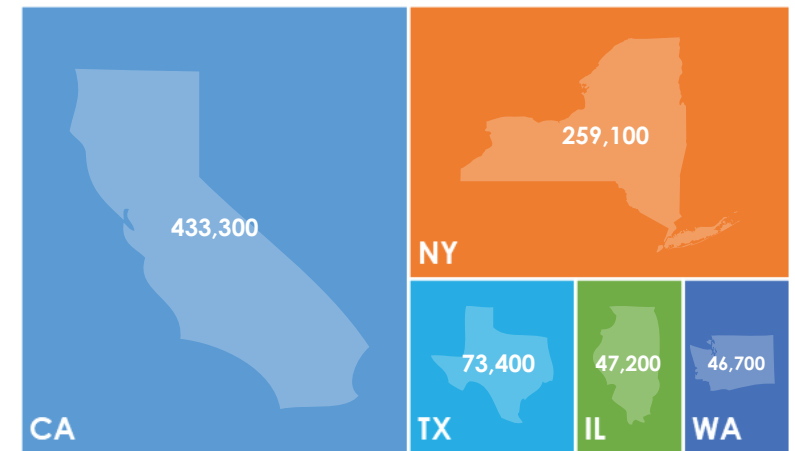
PUBLIC CHARGE PROPOSAL IS AN ATTACK ON AAPI FAMILIES

A new “Public Charge” proposal of the from the White House threatens Asian Americans, Pacific Islanders (AAPI), and other immigrant communities. Under this proposed regulation, anyone applying for a green card or entry to the U.S. could be denied if they or their non-U.S. citizen family members use government programs. This administration wants to divide us based on who we are, where we come from and how much money we make. But, you can stay updated by visiting bit.ly/JoinUsToProtectFamilies.

AT RISK



Top 5 states by number of AAPIs in immigrant families using Medicaid or CHIP.^v These states could see \$2.9 billion in Medicaid cuts due to a chilling effect among AAPI immigrants alone.^{vi}



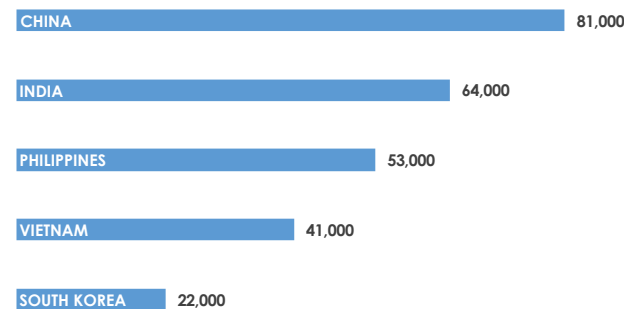
SIGNIFICANT IMPACT

 **31% of the 1.1 million** getting green cards each year are from Asia and Pacific Island nations.^{vii}

 **40%** of family-based immigrants are from Asia & Pacific Island nations.

 **54%** of employment-based immigrants are from Asia & Pacific Island nations.

Top Asian and Pacific Island Countries with number of people receiving green cards in 2016



Citizens from the Republic of Palau, the Federated States of Micronesia and the Republic of the Marshall Islands may enter, live, and work in the U.S. under an agreement (Compact of Free Association, or COFA) stemming from U.S. nuclear testing around their home islands. Many still encounter the consequences of this testing, such as elevated cancer rates and other long-term chronic disparities. Public charge could be used to deny COFA entry and ability to live in the U.S. – abandoning our nation’s commitment to our Pacific allies. This could impact the over 61,000 COFA persons now living in the U.S.^{viii}

ⁱ Batalova, Jeanne, Michael Fix and Mark Greenberg, "Chilling Effects: The Expected Public Charge Rule and Its Impact on Legal Immigrant Families' Public Benefits Use," Migration Policy Institute. (June 2018). Available at: <https://www.migrationpolicy.org/research/chilling-effects-expected-public-charge-rule-impact-legal-immigrant-families> Table 5. In the proposed regulation, Medicaid is explicitly counted as a negative factor. CHIP is proposed as a potential negative factor.

ⁱⁱ Migration Policy Institute tabulation of the U.S. Census Bureau's 2014-16 American Community Survey data produced at the request of APIAHF. For more public-charge related resources and data from the Migration Policy Institute (MPI), visit MPI at: <https://www.migrationpolicy.org/research/chilling-effects-expected-public-charge-rule-impact-legal-immigrant-families>.

ⁱⁱⁱ See, for example, Hudson, J. L., & Moriya, A. S. (2017). Medicaid Expansion For Adults Had Measurable 'Welcome Mat' Effects On Their Children. *Health Affairs*, 36(9), 1643-1651. doi:10.1377/hlthaff.2017.0347, available at <https://www.healthaffairs.org/doi/pdf/10.1377/hlthaff.2017.0347>; Venkataramani, M., Pollack, C. E., & Roberts, E. T. (2017). Spillover Effects of Adult Medicaid Expansions on Children's Use of Preventive Services. *Pediatrics*. doi:10.1542/peds.2017-0953, available at <http://pediatrics.aappublications.org/content/pediatrics/early/2017/11/09/peds.2017-0953.full.pdf>

^{iv} Estimates prepared by the Association of Asian Pacific Community Health Organizations, derived in part from U.S. Dept. of Health and Human Services, Health Resources Services Administration, Uniform Data System (UDS). (2016). AAPCHO has a network of 34 health centers.

^v Migration Policy Institute tabulation of the U.S. Census Bureau's 2014-16 American Community Survey data produced at the request of APIAHF. For more public-charge related resources and data from the Migration Policy Institute (MPI), visit MPI at: <https://www.migrationpolicy.org/research/chilling-effects-expected-public-charge-rule-impact-legal-immigrant-families>.

^{vi} AAPCHO calculation of Medicaid funding cuts based on average per-beneficiary spending and a 60% disenrollment scenario among AAPI noncitizens.

^{vii} APIAHF analysis of Department of Homeland Security Data.

^{viii} *Compacts of Free Association: Actions Needed to Prepare for the Transition of Micronesia and the Marshall Islands to Trust Fund Income*," Government Accountability Office. (May 2018). Available at: <https://www.gao.gov/assets/700/691840.pdf>.